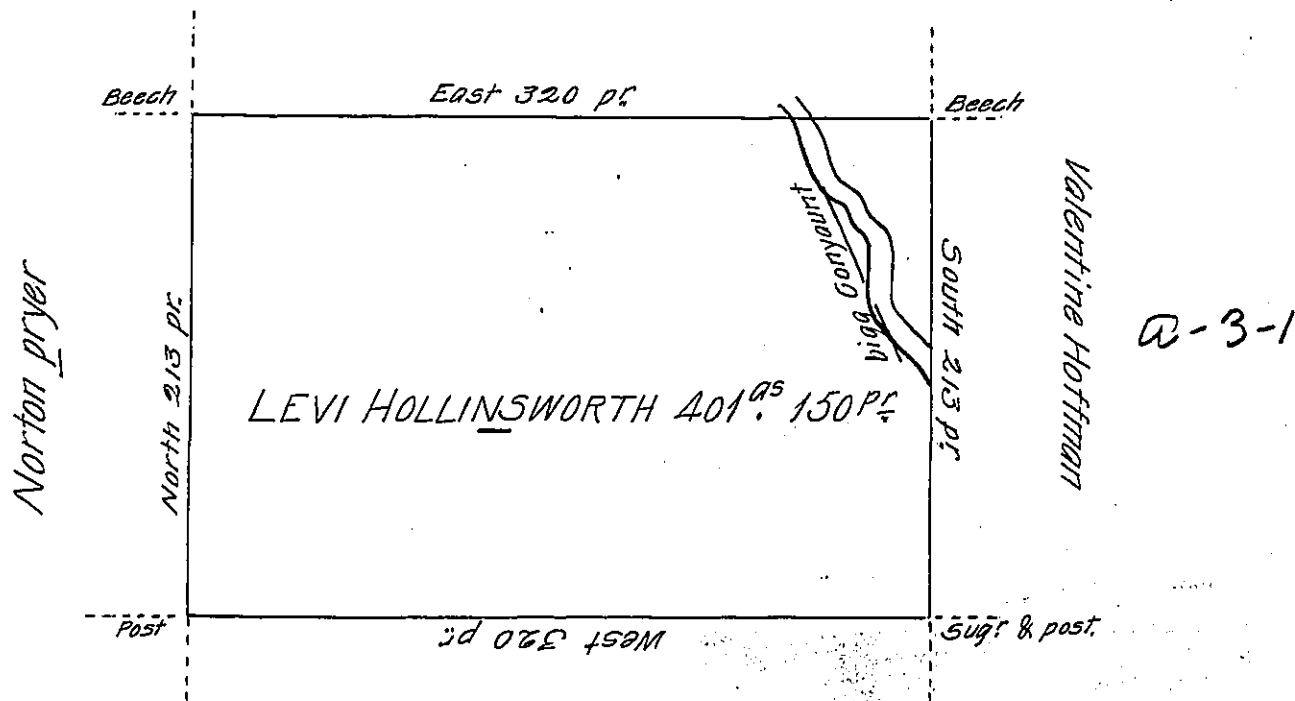


D. 5-273



Geo. Honey
C82-180

Situate on the West Side of French Creek in Allegheny County Containing 401^a & 150 perches and allowance of Six pc. Cent. for Roads &c. Surveyed the 11th day of May 1795. In pursuance of a Warrant Dated the 30th Day of May 1792.

Wm Power D.Y.S.

To Dan! Brodhead Esqurie }
Surveyor General }

IN TESTIMONY that the above is a copy of the original remaining on file in the Department of Internal Affairs of Pennsylvania, made conformably to an Act of Assembly approved the 16th day of February, 1833, I have hereunto set my Hand and caused the Seal of said Department to be affixed at Harrisburg, this second day of February 1905.

Geo. P. Brown
Secretary of Internal Affairs.